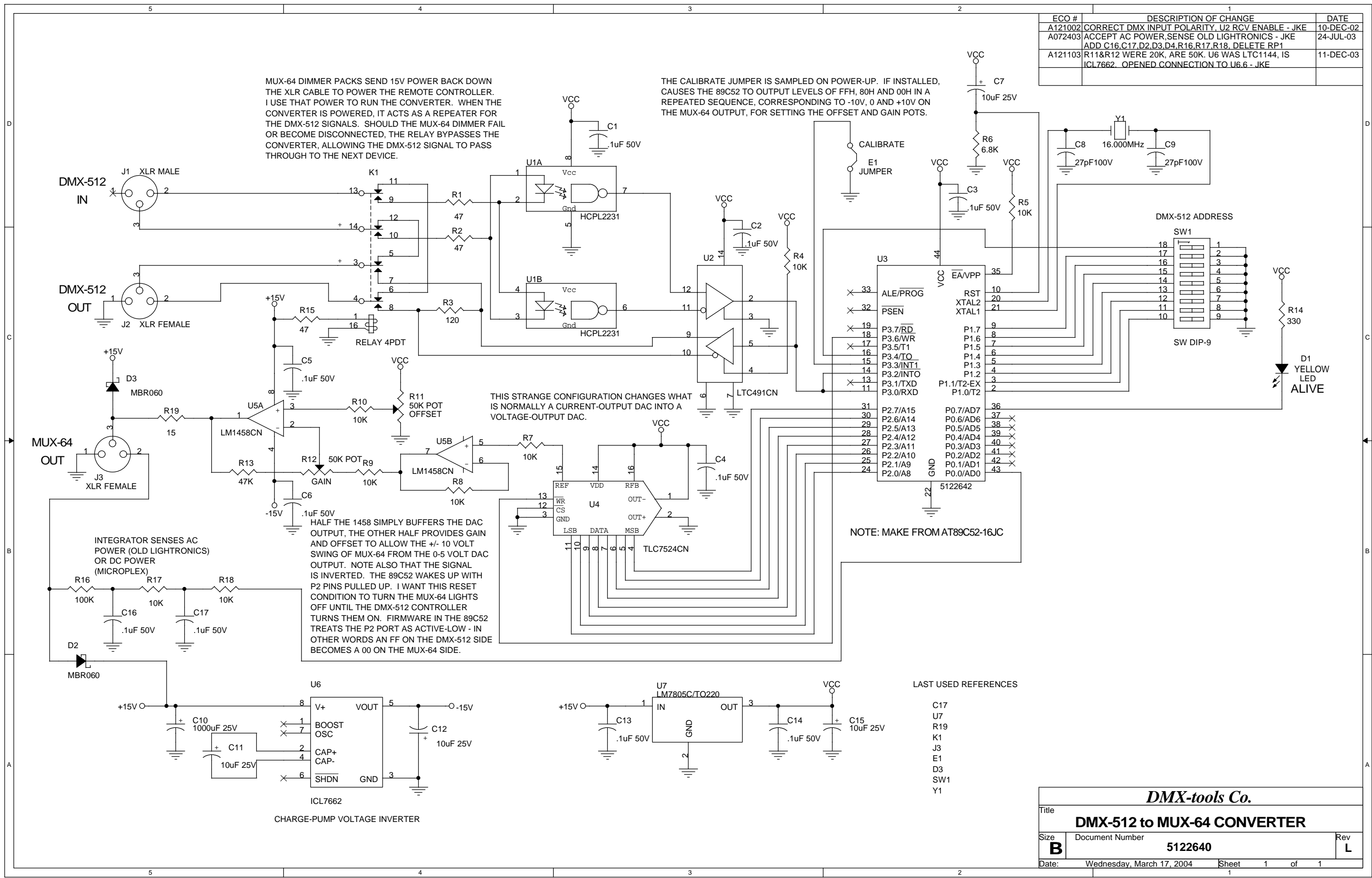


ECO #	DESCRIPTION OF CHANGE	DATE
A121002	CORRECT DMX INPUT POLARITY, U2 RCV ENABLE - JKE	10-DEC-02
A072403	ACCEPT AC POWER, SENSE OLD LIGHTRONICS - JKE	24-JUL-03
A121103	ADD C16, C17, D2, D3, D4, R16, R17, R18, DELETE RP1 R11 & R12 WERE 20K, ARE 50K. U6 WAS LTC1144, IS ICL7662. OPENED CONNECTION TO U6.6 - JKE	11-DEC-03



DMX-tools Co.		
Title DMX-512 to MUX-64 CONVERTER		
Size B	Document Number 5122640	Rev L
Date: Wednesday, March 17, 2004	Sheet 1 of 1	